



turbolinux7

server

사용자 안내서

7

7,2001 11

©1999 - 2001

. All Rights Reserved.

, . , 가

.

,

,

가 .

,

,

.

가

.

946-1

5

() 135 - 708

t. 02.564.5091

f. 02.564.5095

www.turbolinuxsystems.com

.....	1
.....	1
.....	2
.....	2
7	3

Tubotools.....	4
turbopkg.....	6
turboservice.....	11
turbonetcfg	14
turboprintcfg.....	24

...

< 7>

1993

1997

-
- ()
- ()
-
-

(<http://www.turbolinuxsystems.com/>)

. feedback@turbolinuxsystems.com E - mail .

60 E - mail
http://www.turbolinuxsystems.com/register
7 CD - ROM

가 . .

7

7 가 .

- 7 Install CD 1
- 7 Install CD 2
- 7 Companion CD
- 7
- 7
-
-

<Turbolinux Server 7 User Guide> (/pdf).

Companion CD */docs/en_US/TL7SUserGuide.pdf*

<Turbolinux Server 7 Install Guide> (/pdf).

Companion CD */docs/en_US/TL7SInstallGuide.pdf*

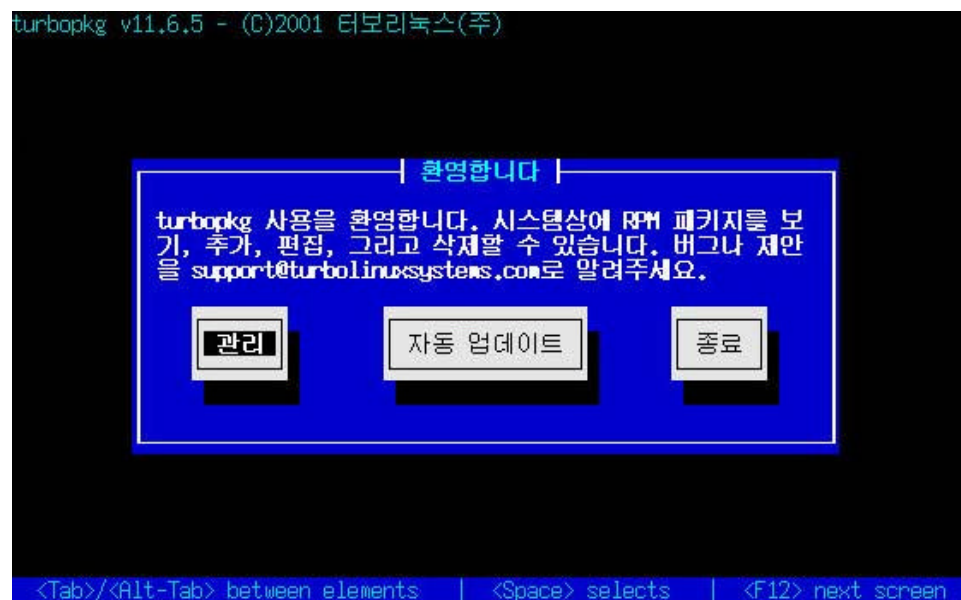
Tubotools

- 7
- 7
- Tubotools
- config
- Tubotool
- turbopkg
 - turboservice
 - turbonetcfg
IP, DNS, GATEWAY
 - turboxcfg
 - turbolangsel
- X-window

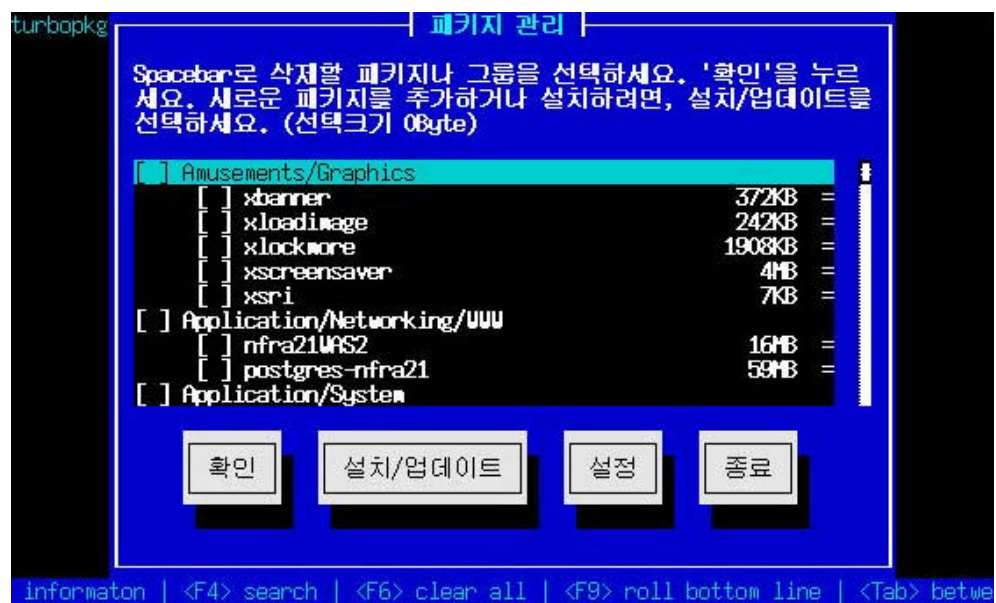
-
-
- `turbowm` . KDE ,
X-window
GNOME, TWM
 - `turbomkboot` .
 - `turbofs` .
nfs
 - `turbotime` .

turbopkg

```
turbopkg          RPM
                  . turbopkg
                  .
                  #  turbopkg
                  '      ' ( 1 ) .
```

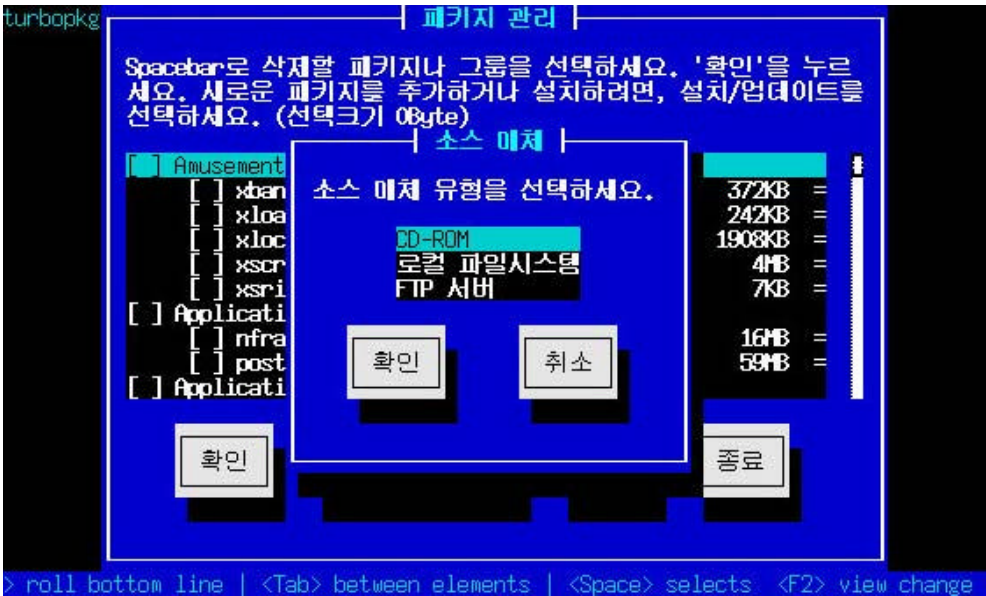


1. ' ' (2) .



2

2. ' / ' (3) .



3

CD - ROM, , FTP 가 .

3. RPM 가 .

4. ' ' (4) .



4

5. .

가

가

*

-

None

가

*

R

None

X

가

가

(4)

가

+

가

-

=

None

R

F2

F3

F4

F5

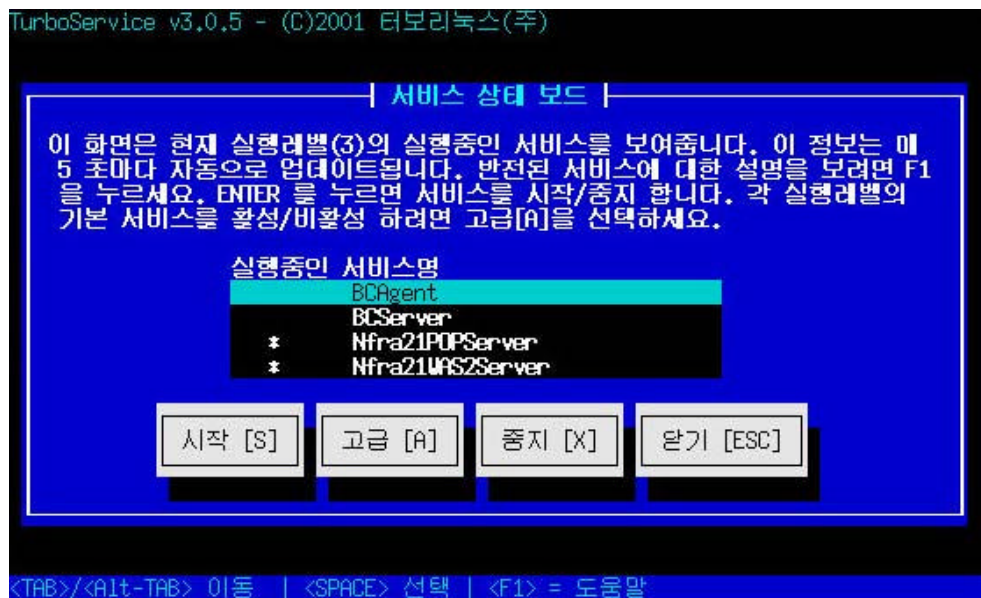
F6

F7

F8

turboservice

turboservice
 () GUI
 () 가
 turboservice
 # turboservice
 (5)



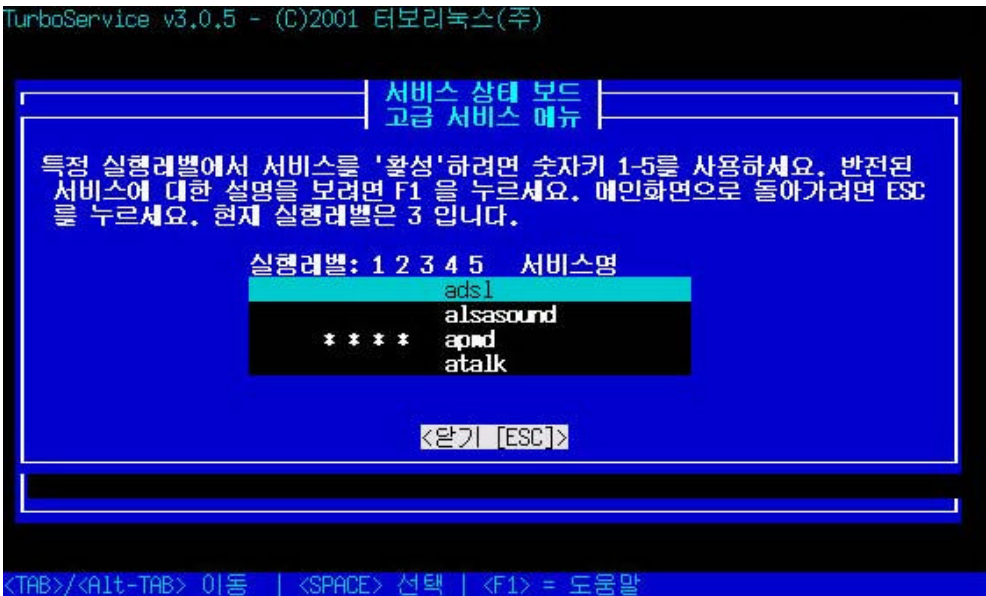
turboservice가 가 .(5)
 “ ” “ ” 가 가 .
 .

None 가 .

? . turboservice
가 .

```
/etc/rc.d/init.d/ .
```


[A]
(6)



6

1-5

,lpd 5 5 lpd 5
Esc Esc turboservice

turbonetcfg

turbonetcfg TCP/IP

```
# turbonetcfg  
( 7 )
```



-
-
-
-
-

Enter

turbonetcfg

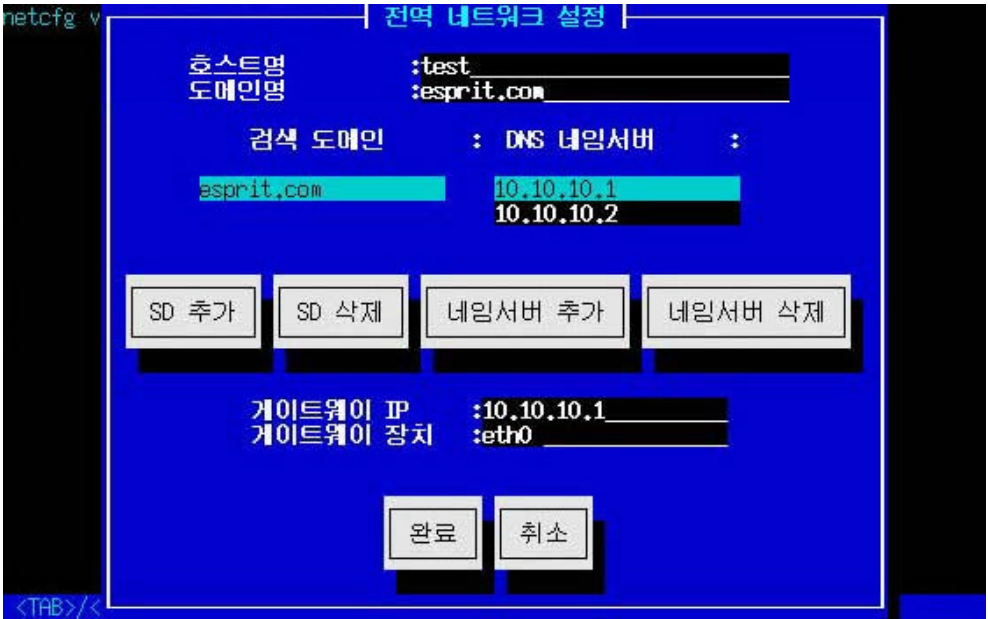
가

(7) ‘ ’ (8) .



‘ ’ .

(7) ‘ , (9)



9

가 . (가 'SD 가' 가
) 'SD ' .

turbotools

DNS

DNS
가'

IP

. DNS

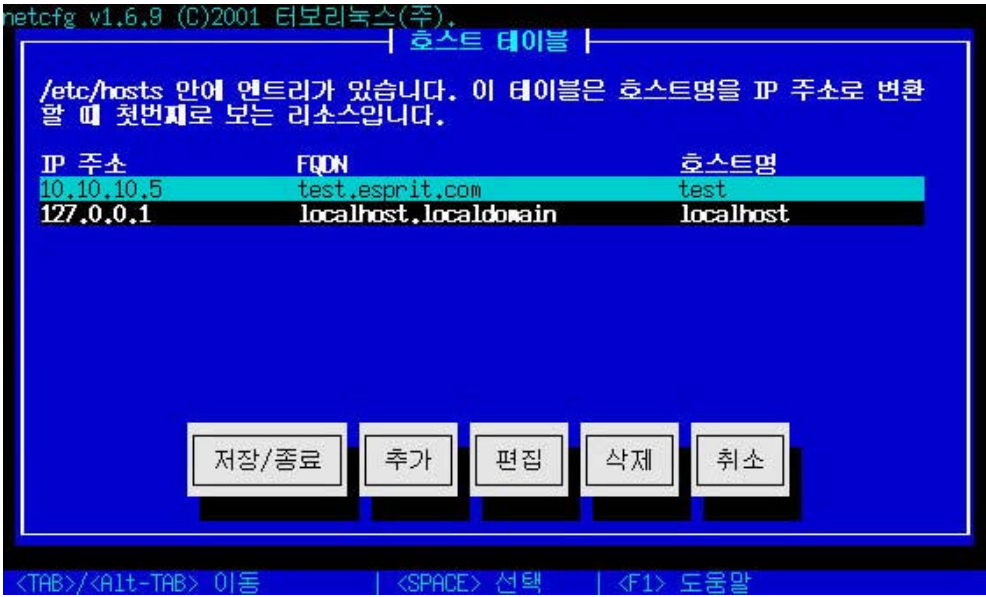
가 ‘ .

IP

IP

가
“eth0”
.

(7) ‘ ’ (10)



/etc/hosts 가 , , .

(7) ‘ , (11) .



가 , “lo” (localhost) “eth0” 가
가 “eth1”, “eth2” 가
‘ [U]’ ‘ [D]’
가 ‘ 가

(11) ‘ ’
(12) .



12

- IP
-
-
-
- DHCP/Bootp

‘ ’ (11).

• “ ” IP .

(‘ ’ ‘ ’) (7) (‘ 13)

가 .



(13)
' ' 가 . N/A
(14) .

netcfg v1.6.9 (C)2001 터보리눅스(주).

인터페이스 통계

Inter-	Receive										
Transmit											
face	bytes	packets	errs	drop	fifo	frame	compressed	multicast	bytes		
	packets	errs	drop	fifo	colls	carrier	compressed				
lo:	0	0	0	0	0	0	0	0	0		
0	0	0	0	0	0	0	0	0	0		
sit0:	0	0	0	0	0	0	0	0	0		
0	0	0	0	0	0	0	0	0	0		
eth0:	12777	101	0	0	0	0	0	0	74		
75736	246	0	0	0	0	0	0	0			

확인

<TAB>/<Alt-TAB> 이동 | <SPACE> 선택 | <F1> 도움말

turboprintcfg

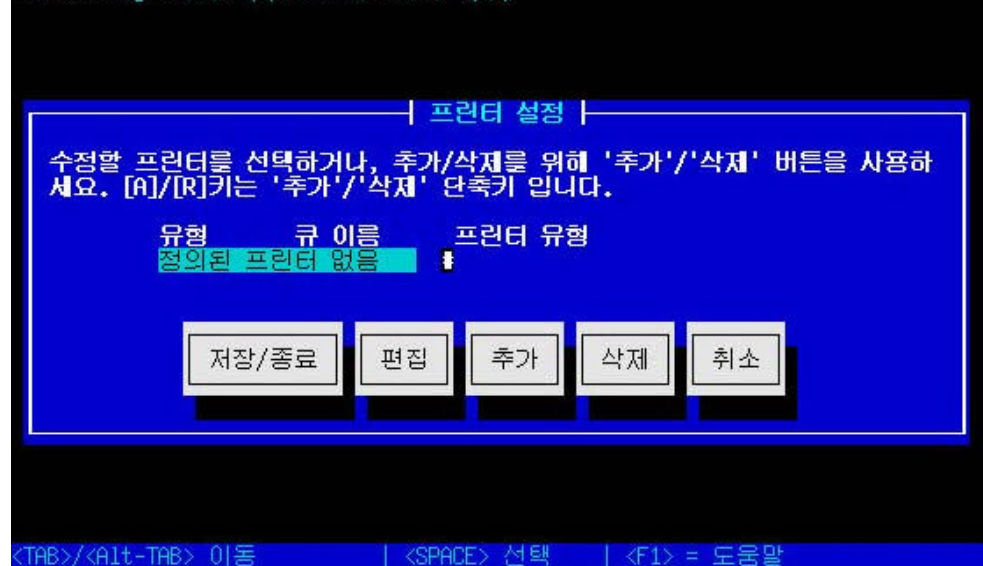
turboprintcfg 가 .

.

```
# turboprintcfg
```

```
( 15 ) .
```

Printconfig v1.2.4 (C)2001 터보리눅스(주)



가

가

1. (15) ' 가 ' .
가 (16) .



16 가

2. .
가 PC

LPD

TCP/IP

/LAN Samba, LAN Manager, Windows
NETBIOS

(17)



- 3. lp가
- 4. ' '

6. $\frac{1}{2} \times \frac{1}{3} = \frac{1}{6}$

1. (15) ' ' .
/p (18) .



18 lp

2. .
3. ' ' turboprintcfg .